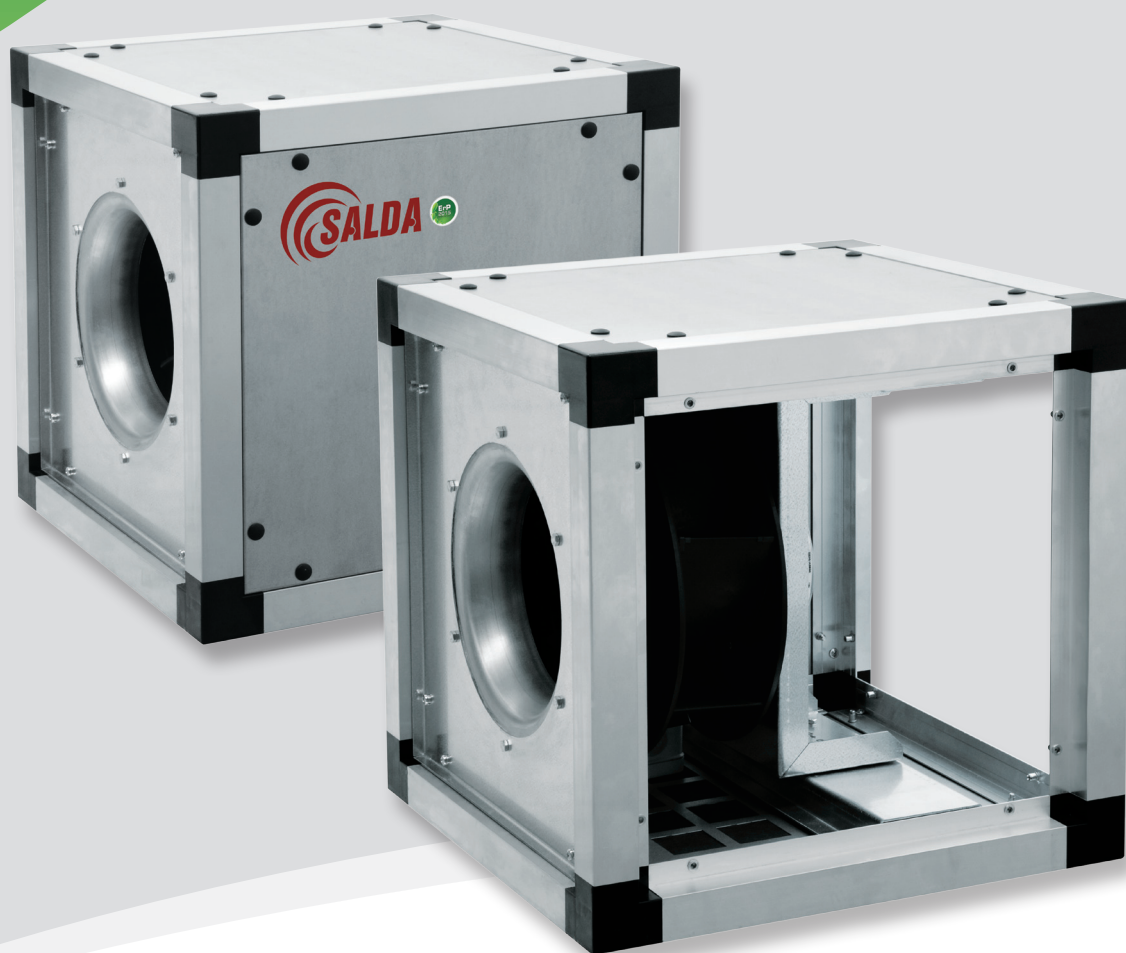


# SALDA

## ACOUSTICALLY INSULATED FANS KUB EKO



1

EC (energy-saving) technology motors.

2

Suitable for every type of ventilation system.

3

7 models range: from 3.500 up to 15.000 m<sup>3</sup>/h.



# Contents



SALDA KUB EKO description	4
SALDA KUB EKO dimensions	6
SALDA KUB EKO technical data	7
SALDA KUB EKO accessories	8

# Product specific information

## **Application:**

- Air supply or extract, based on EC technology - energy-saving;
- For medium to higher air flow volumes against high resistances from 350 m<sup>3</sup>/h to 15.000 m<sup>3</sup>/h;
- Suitable for every type of ventilation \*system;
- Possible installation in any mounting position;
- Typical applications: in apartments, shops, supermarkets, repair shops, warehouses, garages etc. and other areas of slight air contamination.
- \*Note: not suitable for polluted air, aggressive and explosive gases.

## **Housing:**

- Double skinned galvanized panels with non-inflammable noise and temperature insulating (20mm) mineral wool;
- Rigid frame of aluminum profiles with reinforced corners made of polyurethane (PA6);
- Perforated internal panel sheet reducing noise;
- Integrated electronics in the motor housing;
- Highly shock-resistant;
- One connection side of the casing is open as standard (outlet).

## **Speed control:**

- Simply using 0-10V signal integrated into control system (EC controller).

## **Assembly:**

- Safe maintenance and low operating costs;
- Simple setting and adjustment of the complete modular system;
- Five possible discharge directions, removable panels/changeable positions of the unit.

## **Impeller:**

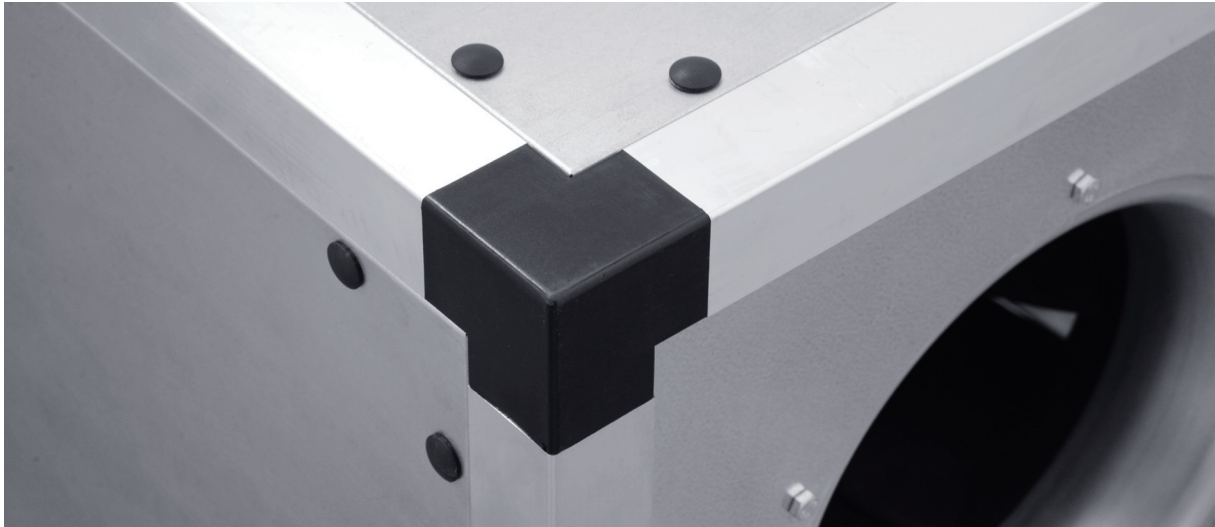
- Centrifugal direct driven;

- Backward curved polymer blades;
- Impellers with the external rotor motors are balanced dynamically at two levels.

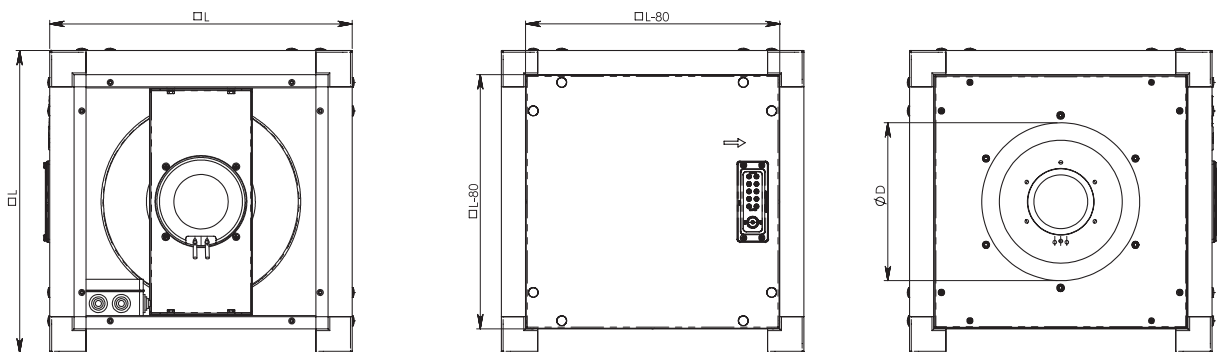
**Motor:**

- Energy saving EC;
- External rotor with high efficiency;
- Direct transmission with no maintenance requirements;
- Built- in thermal contacts for thermal overload protection;
- Insulation class F;
- One potential - free terminal for error message, suitable to be used for 50/60Hz.
- Electrical connection:
  - Input voltage for single phase units can vary between 200 and 277V, for three phase units between 380 and 480V;
  - From size 450 the motor has an output voltage of 10V and 20V for an external potentiometer;
  - Terminal box is affixed to the motor housing;
  - Terminal box protection.

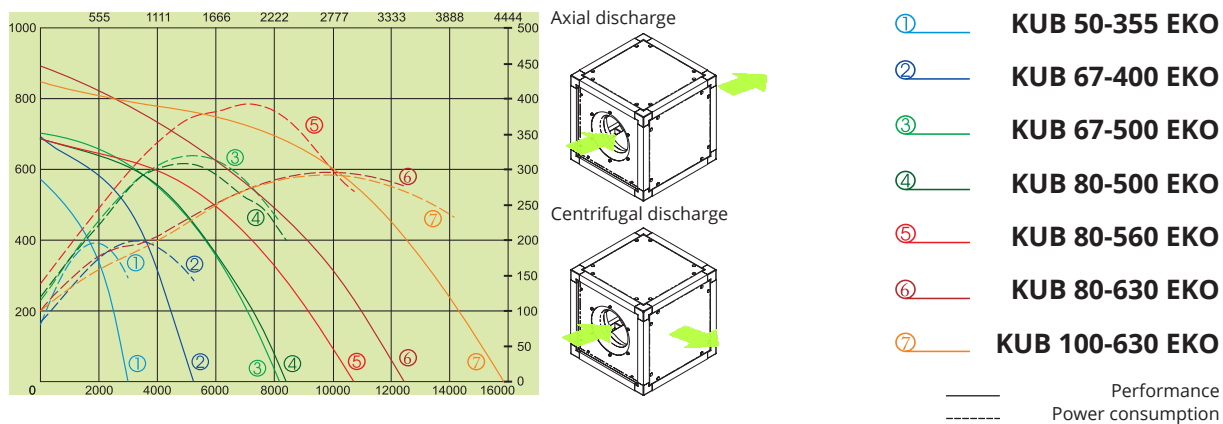
# Technical data



Type	Dimensions [mm]	
	$\varnothing D$	$\square L$
KUB 50-355 EKO	261	500
KUB 67-400 EKO	325	670
KUB 67-500 EKO	412	670
KUB 80-500 EKO	410	800
KUB 80-560 EKO	461	800
KUB 80-630 EKO	512	800
KUB 100-630 EKO	510	1000



# Technical data



		<b>50-355</b>	<b>67-400</b>	<b>67-500</b>	<b>80-500</b>	<b>80-560</b>	<b>80-630</b>	<b>100-630</b>
Voltage/Frequency	[V/Hz]	230/50	230/50	400/50	400/50	400/50	400/50	400/50
Power consumption	[kW]	0,407	0,764	1,286	1,250	1,573	2,956	2,900
Current	[A]	1,93	3,46	2,04	2,0	2,45	4,55	4,48
Speed	[min <sup>-1</sup> ]	2010	1700	1400	1400	1230	1230	1230
Max. airflow	[m <sup>3</sup> /h]	3000	5220	8070	8370	10740	15000	15900
Max. air temperature in the duct	[°C]	60	60	60	60	60	60	60
Weight	[kg]	28	50	51	75	87	73	116
Protection class:	motor	IP-54	IP-54	IP-54	IP-54	IP-54	IP-54	IP-54
	terminal box	IP-55	IP-55	IP-55	IP-55	IP-55	IP-55	IP-55
Comply with ERP 2013, 2015		+	+	+	+	+	+	+

<b>80-560</b>	Lwa total, dB(A)	LWA, dB(A)						
		125 Hz	250 Hz	500 Hz	1 kHz	2 kHz	4 kHz	8 kHz
Inlet	80	68	72	73	73	72	69	67
Outlet	82	67	73	77	75	74	70	67
Surrounding	68	56	62	62	60	59	56	54

Measured at 8566 m<sup>3</sup>/h, 151 Pa

<b>80-630</b>	Lwa total, dB(A)	LWA, dB(A)						
		125 Hz	250 Hz	500 Hz	1 kHz	2 kHz	4 kHz	8 kHz
Inlet	83	69	78	76	77	75	71	67
Outlet	85	68	76	81	79	78	73	71
Surrounding	73	58	67	67	66	64	59	57

Measured at 11073 m<sup>3</sup>/h, 183 Pa

<b>100-630</b>	Lwa total, dB(A)	LWA, dB(A)						
		125 Hz	250 Hz	500 Hz	1 kHz	2 kHz	4 kHz	8 kHz
Inlet	85	69	79	78	77	76	74	73
Outlet	87	68	77	82	80	79	75	76
Surrounding	76	60	69	71	69	67	64	60

Measured at 13359 m<sup>3</sup>/h, 149 Pa

<b>50-355</b>	Lwa total, dB(A)	LWA, dB(A)						
		125 Hz	250 Hz	500 Hz	1 kHz	2 kHz	4 kHz	8 kHz
Inlet	69	50	59	65	62	61	57	53
Outlet	73	51	62	68	69	66	61	55
Surrounding	56	38	47	51	50	47	42	39

Measured at 2366 m<sup>3</sup>/h, 150 Pa

<b>67-400</b>	Lwa total, dB(A)	LWA, dB(A)						
		125 Hz	250 Hz	500 Hz	1 kHz	2 kHz	4 kHz	8 kHz
Inlet	72	59	62	68	65	62	63	61
Outlet	76	58	64	70	73	68	64	60
Surrounding	60	45	51	56	54	49	47	45

Measured at 4264 m<sup>3</sup>/h, 150 Pa

<b>67-500</b>	Lwa total, dB(A)	LWA, dB(A)						
		125 Hz	250 Hz	500 Hz	1 kHz	2 kHz	4 kHz	8 kHz
Inlet	76	64	69	71	67	67	65	64
Outlet	80	61	72	75	75	71	67	65
Surrounding	62	48	57	57	55	52	50	49

Measured at 6138 m<sup>3</sup>/h, 150 Pa

<b>80-500</b>	Lwa total, dB(A)	LWA, dB(A)						
		125 Hz	250 Hz	500 Hz	1 kHz	2 kHz	4 kHz	8 kHz
Inlet	79	67	72	74	70	69	67	65
Outlet	83	69	74	78	76	74	72	67
Surrounding	66	54	59	61	59	55	54	50

Measured at 6907 m<sup>3</sup>/h, 181 Pa



Type	Accessories					
	MTP010	LJ/PG	SSK	LGd	SSP	Main switch
KUB 50-355 EKO	+	420x420	420x420	380x380	460x460	BWS316 Y TPN
KUB 67-400 EKO	+	590x590	590x590	550x550	630x630	BWS316 Y TPN
KUB 67-500 EKO	+	590x590	600x600	550x550	630x630	BWS316 Y TPN
KUB 80-500 EKO	+	590x590	600x600	550x550	630x630	BWS316 Y TPN
KUB 80-560 EKO	+	720x720	720x720	680x680	760x760	BWS316 Y TPN
KUB 80-630 EKO	+	720x720	720x720	680x680	760x760	BWS316 Y TPN
KUB 100-630 EKO	+	920x920	920x920	880x880	960x960	BWS316 Y TPN

